



HUGH MACKAY

carpets

Natures Own Product Profile



Carpet Details:

Specification	
Construction:	Woven Axminster
Texture:	Cut Pile Velour
Pitch:	7 per inch/27.6 per dcm
Rows:	8 per inch/31.5 per dcm
Pile Weight:	1270g/m2
Total Weight:	2500g/m2
Tuft Density per m2:	86,940
Backing:	Woven Jute & Cotton
Pile Yarn Content:	100% undyed wool
Pile Height:	7.5mm
TOG:	1.00
Width:	4m

Features

Available in 4m broadloom only.
Regular Nationwide delivery service
Fashionable colours to meet a wide variety of interior styles. Ease of maintenance.
Made in: EU
Available from stock.

General Information

Pile reversal: All cut pile carpets can suffer from pile reversal and in certain instances this may become permanently bent or distorted for no specific reason that research has yet identified, giving areas of light and shade. This is also known as "shading" or "watermarking". It is not a defect in manufacture, it only occurs in a small percentage of all carpets and no liability whatsoever can be accepted by the manufacturer in respect of it.

Pile pressure: All cut pile carpets are liable to show light and dark patches resulting from disturbance of the pile created by foot traffic or brushing, This is a normal feature and is not a defect in manufacture and no liability whatsoever can be accepted by the manufacturer in respect of it.

Pale shades: We include within our collection a number of pale shades. Primarily these are used as top or highlight colours. These more delicate shades will invariably tend to soil more quickly and give a lower of light fastness than the norm, and may show natural blemishes within the fibre that tend to be masked in deeper shades containing a greater quantity of dyestuff.

Tested for

Suitability

Heavy Domestic/Heavy Commercial Class 33
BS EN 1307:2005

Flammability

Fire behaviour : CFL (in accordance with clause
Smoke production : S1 11 of EN 13501-1:2002)
Low radius of char (BS4790 BS5287)

Castor Chair

Not recommended unless protecting mat is present.

Suitability for Stairs:

Yes (For maximum performance (in accordance with BS EN1307) we recommend the use of an approved stair nosing and the movement of carpet every 6 months from tread to rise)

Installation

To be installed in accordance with BS5325 "Code of Practice for the Installation of Floor Coverings" and NICEF manual.

For quantity orders requiring colour matching, please state at the time of ordering.

All samples may not be from the same production batch as current stock and therefore should be used as a guide and not as an exact match.

Colour variations: There may be colour variations/shade variations between each batch of carpet as well as with undyed materials.

Undyed Wool: Due to the inherent natural variations in undyed wool and the current blending techniques, there may be noticeable shade variations between the colours used in the same material and the actual production. Pattern match cannot be guaranteed with any tufted patterned carpet.

Maintenance

Hugh Mackay & Whitestone Weavers recommend that this carpet is maintained in accordance with an agreed maintenance schedule which should include the following:

- i). Vacuum regularly.
- ii). Remove spills immediately.
- iii). Professionally clean as required.



Carpet Images



Casino Maple
Pattern Repeat:
W: 100cm (half drop)
x L: 91cm



Casino Pine
Pattern Repeat:
W: 100cm (half drop)
x L: 91cm



Country Maple
Pattern Repeat:
W: 100cm (half drop)
x L: 86cm



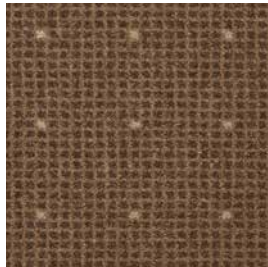
Country Oak
Pattern Repeat:
W: 100cm (half drop)
x L: 86cm



Country Pine
Pattern Repeat:
W: 100cm (half drop)
x L: 86cm



Dimensions Maple
Pattern Repeat:
W: 8.7cm x L: 8.6cm



Dimensions Oak
Pattern Repeat:
W: 8.7cm x L: 8.6cm



Manor Elm
Pattern Repeat:
W: 102.9cm x L: 50cm



Manor Maple
Pattern Repeat:
W: 102.9cm x L: 50cm



Manor Oak
Pattern Repeat:
W: 102.9cm x L: 50cm



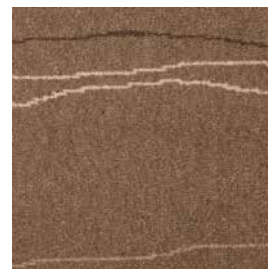
Manor Pine
Pattern Repeat:
W: 102.9cm x L: 50cm



Matrix Oak
Pattern Repeat:
W: 11.6cm x L: 11.4cm



Matrix Pine
Pattern Repeat:
W: 11.6cm x L: 11.4cm



New Wave Oak
Pattern Repeat:
W: 66cm x L: 58cm



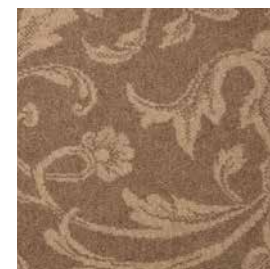
New Wave Pine
Pattern Repeat:
W: 66cm x L: 58cm



Sophistication Maple
Pattern Repeat:
W: 50cm x L: 46cm



Sophistication Pine
Pattern Repeat:
W: 50cm x L: 46cm



Stately Oak
Pattern Repeat:
W: 200cm x L: 100.6cm



Stately Pine
Pattern Repeat:
W: 200cm x L: 100.6cm



Striped Elm
Pattern Repeat:
W: 33cm x
L: Continuous



HUGH MACKAY

carpets

Natures Own Product Profile



Carpet Images



Striped Pine
Pattern Repeat:
W: 33cm x
L: Continuous



Striped Walnut
Pattern Repeat:
W: 33cm x
L: Continuous



Stately Pine



HUGH MACKAY
carpets

Natures Own Product Profile



Carpet Images



New Wave Oak



HUGH MACKAY
carpets

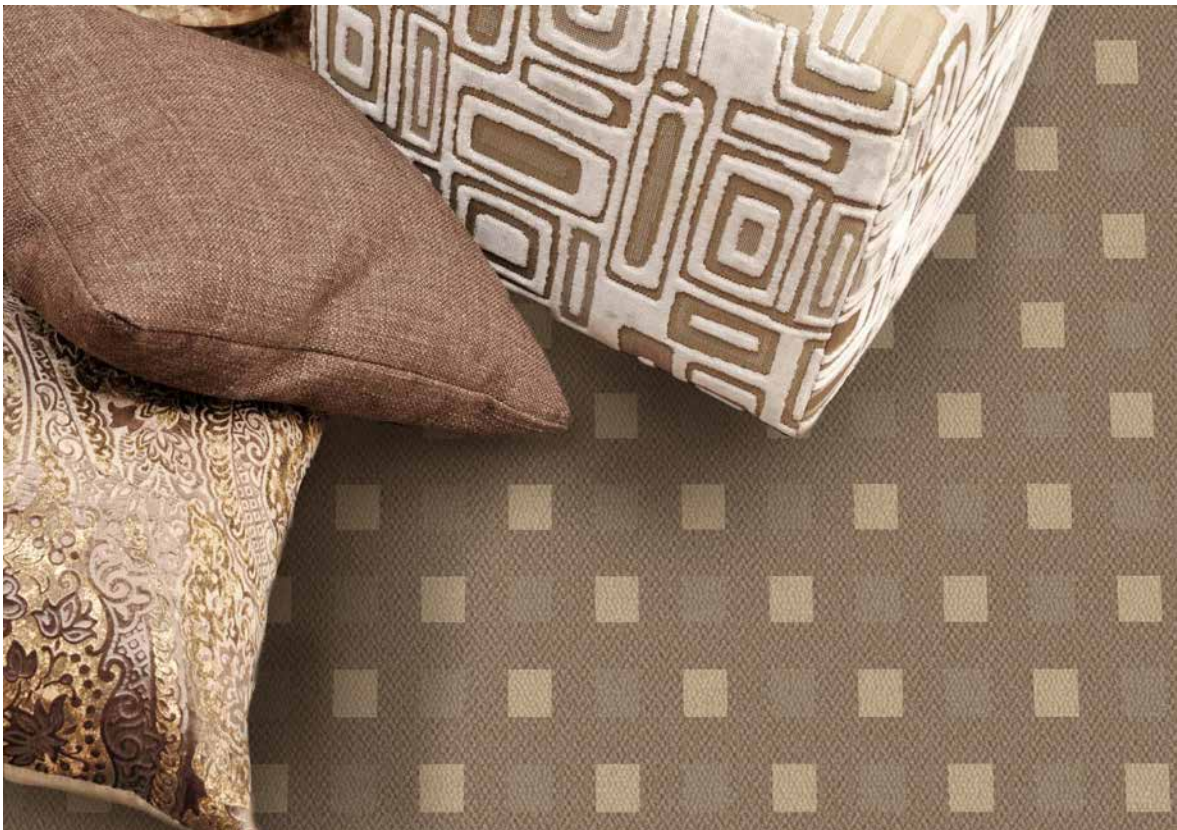
Natures Own Product Profile



Carpet Images



Matrix Pine



Matrix Oak